

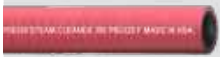


Our Full Lineup of Washdown Hoses Featuring Microban®



Continental keeps your workplace safe from harmful bacteria, mold and mildew with our exclusive Microban® antimicrobial technology on our washdown hose. Use them in food processing plants, dairies, packing houses, bottling plants, breweries, canneries and creameries.

	Cover	Tube	Reinforcement	Size	Pressure
LOW-PRESSURE HOSES					
	Fortress® 300 - Blue	Blue Carbryn™ synthetic rubber, ARPM Class A (High Oil Resistance) with Microban® product protection	White FDA compliant Nitrile synthetic rubber	Spiral synthetic yarn	½" - 1" 300 PSI
	Fortress® 300 - Yellow	Yellow Carbryn™ synthetic rubber, ARPM Class A (High Oil Resistance) with Microban® product protection	Black Nitrile synthetic rubber	Spiral synthetic yarn	½" - 1" 300 PSI
	Fortress® 300 - White	White Nitrile synthetic rubber	Black Nitrile synthetic rubber	Spiral synthetic yarn	½", ¾", 1" 300 PSI
	Sani-Wash™ Supreme 300	White EPDM with Microban® product protection	White FDA compliant EPDM	Spiral textile reinforcement	½", ¾" 300 PSI
	Super Sani-Wash™ 300	White EPDM synthetic rubber with Microban® product protection	EPDM synthetic rubber	Spiral textile reinforced	½", ¾", 1" 300 PSI
	Sani-Wash™ 300	White EPDM synthetic rubber	EPDM synthetic rubber	Spiral textile reinforced	½" - 1" 300 PSI
	WHITEWATER® Steam Cleaning	Black or Red Chlorosulfonated Polyethylene	Black Pyrosyn® synthetic rubber Up to 325°F at 350 PSI WP	One braided steel wire	¾", 1" 350 PSI
HIGH-PRESSURE HOSES					
	Fortress® 1000	Yellow Carbryn™ synthetic rubber, ARPM Class A (High Oil Resistance) with Microban® product protection	Black Nitrile synthetic rubber	One braided synthetic yarn	¼" - ¾" 1000 PSI
	Fortress® 3000	Yellow Carbryn™ synthetic rubber, ARPM Class A (High Oil Resistance) with Microban® built-in product protection	Black Nitrile	One braided steel wire	¼" - ½" 3000 PSI
	SPIRAFLOW	Blue Grooved synthetic rubber for Anti-Damming	Black Nitrile synthetic rubber	One braided steel wire	¾" 4000 PSI
	WHITEWATER® Pressure Washer	Black or Red Chlorosulfonated Polyethylene	Black Pyrosyn® synthetic rubber Up to 250°F at 3000 PSI WP	One braided steel wire	¾", 1" 3000 PSI, 2500 PSI

Nitrile vs. EPDM:

When to use Nitrile

- Water with light cleaning chemical or oil solvent is present
- The application involves **oil, animal fats or grease** touching the cover
- Higher abrasion resistance is required

When to use EPDM

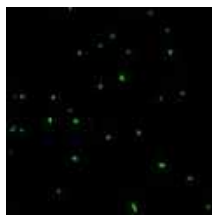
- Water with light cleaning chemical additives are present
- The application **does not involve oil** touching the cover
- A broad temperature rating is required
- Abrasion resistance is not needed

Benefits of Microban®

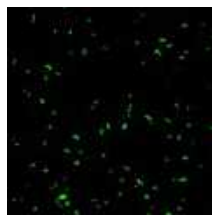
- Continental is the only hose manufacturer in the world that offers Microban®
- Provides around the clock antimicrobial protection
- Keeps hoses cleaner between uses
- Helps prevent hose degradation from damaging bacteria, mold and mildew
- Major selling point for customers/end users who have frequent facility inspections
- Available for multiple hoses: Vintner™, ExtremeFlex™ Beverage, Washdown

Microban® Technology Efficacy Demonstration with Bacteria Shown

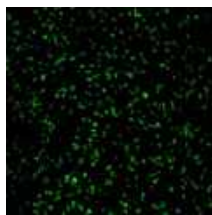
Unprotected Surface



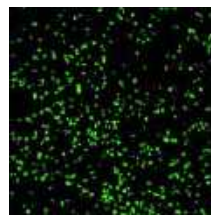
2 hours



16 hours



20 hours

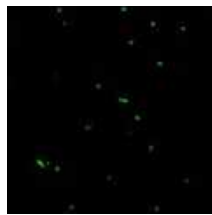


24 hours

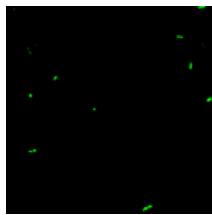
Surface with Microban® Antimicrobial Protection



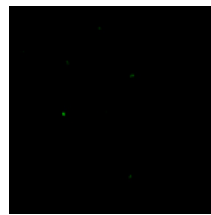
2 hours



16 hours



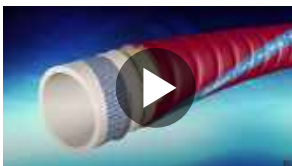
20 hours



24 hours

• Green indicates bacteria

This information is based upon standard laboratory tests and is provided for comparative purposes to substantiate antimicrobial activity for non-public health applications. Microban® technology is not designed to replace good hygiene practices or protect users from disease-causing microorganisms. Antimicrobial action is limited to product surface.



[Check out our YouTube channel to find out more about Microban® technology.](#)



[For more information on Continental hose with Microban® antimicrobial technology, download the brochure here.](#)